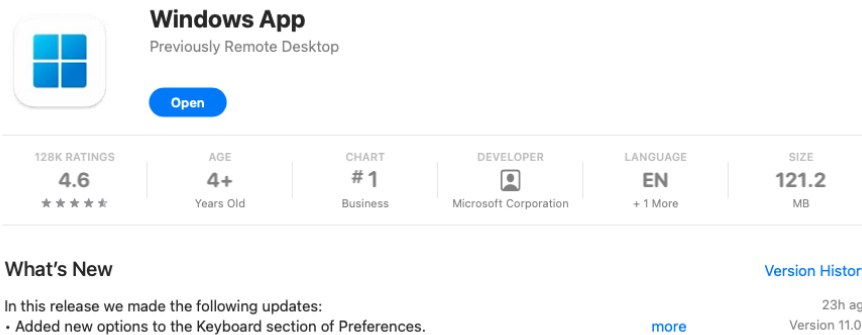




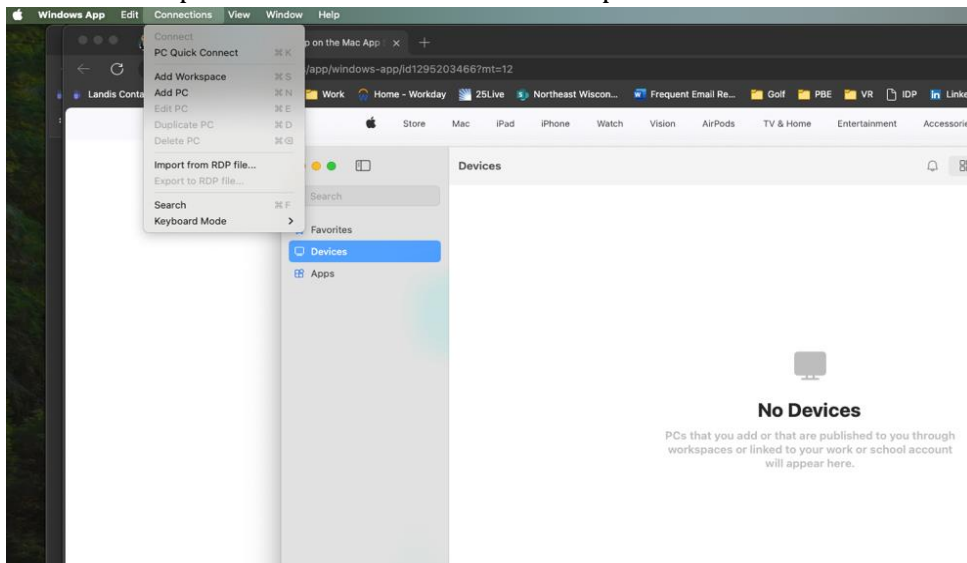
## NWTC Virtual Software Access with Mac OS

1. Install the Windows App Application (if it is already installed, move to step two)
  - a. Open the Apple App Store, search for Windows App or click Install Link: <https://apps.apple.com/us/app/windows-app/id1295203466?mt=12> Note: you will need an apple ID to install this software from the app store.

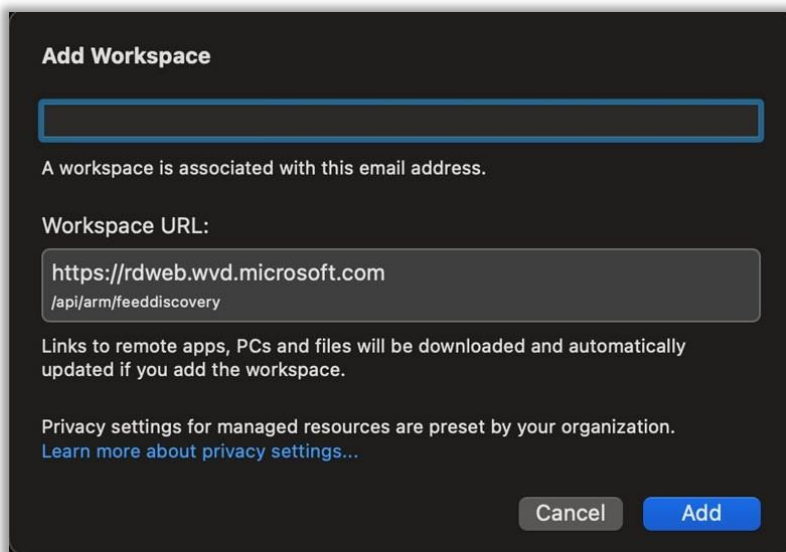


2.

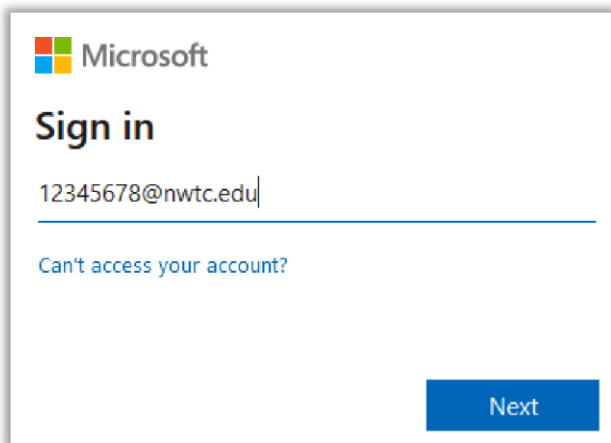
2. Click the Workspaces tab and click the Add workspace button




3. At the add workspace prompt, use your NWTC student or employee ID number, followed by @nwtc.edu, then click the Add button Example: [12345678@nwtc.edu](mailto:12345678@nwtc.edu)



4. At the Microsoft Sign in, use your NWTC student or employee ID number, followed by @nwtc.edu Example: [12345678@nwtc.edu](mailto:12345678@nwtc.edu)



5. Enter your NWTC account password

 **NORTHEAST**  
WI Technical College

## Enter password

Password

[Forgot my password](#)

[Use your face, fingerprint, PIN, or security key instead](#)

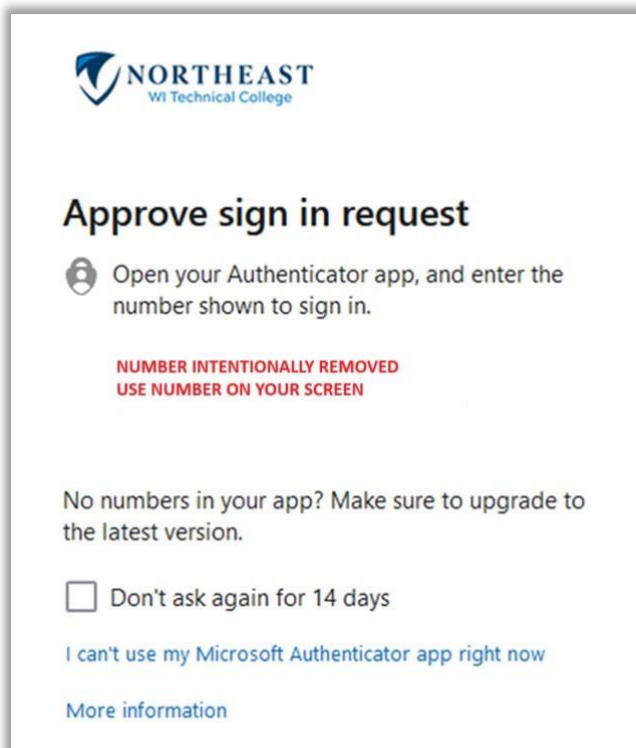
[Sign in](#)

Example: 00000001@NWTC.EDU, Note, this is your login information only and not your email address.

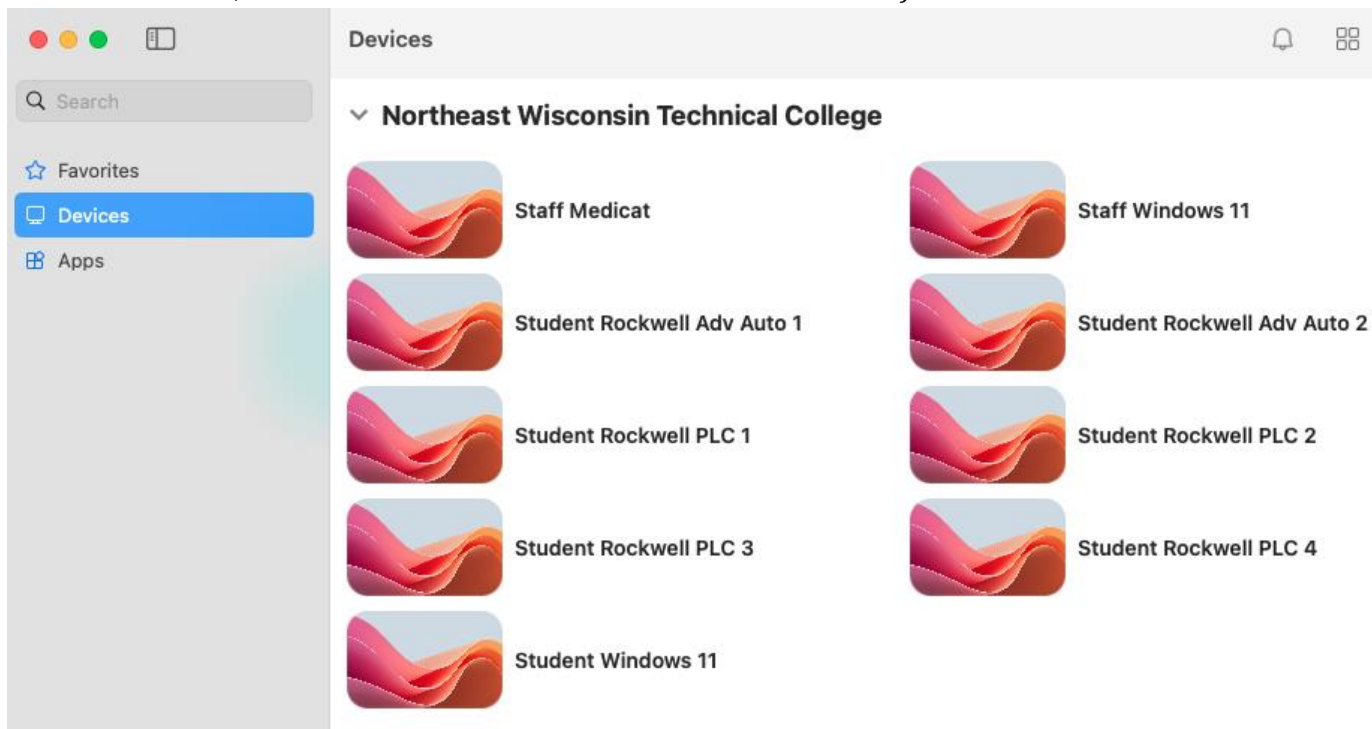
To reset your password: <https://pwd.nwtc.edu>

Need help? Contact the NWTC Student Help Desk at (866) 235-5037 or the Staff Help Desk at (920) 498-6800

6. Approve the sign in by completing the two factor request

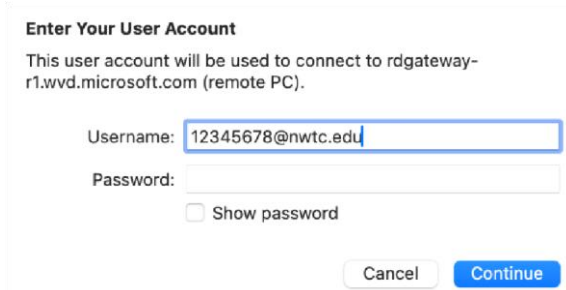


7. Chose Windows Student or Windows Staff (if you are both staff and student but are doing course work, choose Windows Student to access student software)

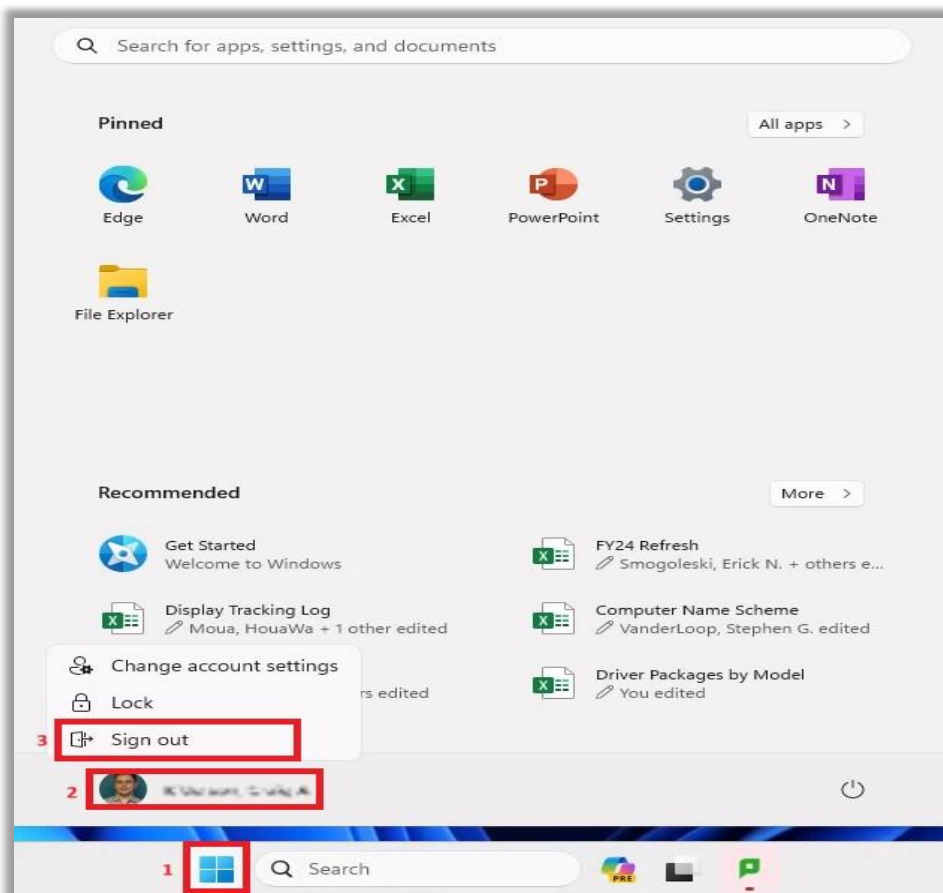


- 8. If it asks to login again, enter your username and password, ensuring that username is your NWTC student or employee ID number followed by @nwtc.edu and password is your NWTC account password

Example username: 12345678@nwtc.edu



- 9. After pressing enter or clicking submit, you will be logged into the NWTC Windows computer with NWTC software. Once you are finished, log out of the desktop by clicking on the start menu in the NWTC computer, clicking on your NWTC user name, and choosing "Sign out" in the menu



- 10. You can now close Windows App