

CERAMIC STUDIO NEWSLETTER

Artisan
and business center
— NWTC —
BLOCK 6 2024

10% Discount on
SPECKLED CLAY!

Laguna Speckled
#50 WC606



HANSEN GREEN and **CORAL RED**
will be restocked on
NOVEMBER 1ST
as seasonal glazes!



CHECK FOR TOOLS!

To help reduce the debris / foreign objects in our reclaim please check the water buckets for any tools before disposing of clay into the reclaim bins. Any tools or sponges that make their way to the pugmill will be shredded and end up mixed in with our pugged reclaim.

A few of the items found in the reclaim bins this past block:

RECLAIM CLAY DISCLAIMER:
CLAY MAY CONTAIN
DEBRIS/FOREIGN OBJECTS



Did You Know?

The Ceramic Studio
is used by over

150

MEMBERS AND STUDENTS!

With a community of more than 150 members and students using the studio, accidents are bound to happen. During glaze firing, there may be instances of glaze dripping or splattering onto kiln shelves, kiln walls, and even affecting other artists' work. We ask that you take care while glazing and follow all procedures.

The ABC staff takes precautions to ensure that all work is safely processed through the kiln. However, unexpected incidents may still occur that are beyond our control.

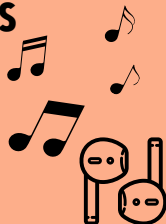
STUDIO UPDATE

Extra lighting has
been installed above
our glazing tables!



PLEASE BE CONSIDERATE OF OTHERS

STEP OUTSIDE OF THE STUDIO TO TAKE
PHONE CALLS AND USE HEADPHONES
FOR MUSIC.



KEY DATES

Here are some upcoming **KEY DATES** for the end of the year!
Pay close attention if you are trying to get artwork through the kilns
before winter break.

CLAY STUDIO - MEMBERS & CURRENT STUDENTS:
Last day to place **BONE DRY** items on bisque shelf -
12/3/24 by 7:30pm

Last day to place items on glaze shelf - **12/11/24 by 7:30pm**

ALL STUDIOS:
Last day studios are open before winter break -
12/20/24 until 2:30pm

CLOSED FOR WINTER BREAK - 12/21/24 UNTIL 1/5/25
OPEN STUDIO RESUMES 1/6/25!

POLICY CLARIFICATION

Artisan Center staff continuously fire kilns to accommodate student and member works, following professional guidelines for kiln efficiency and artwork care. Priority kiln space is given to students to ensure learning objectives are completed.

FIRING WORKS TO COMPLETION BY REQUESTED OR SPECIFIED DEADLINES IS NOT GUARANTEED.

1st QUARTER CHALLENGE

Open to ALL Students & Open Studio Members

FALL/AUTUMN THEMED ARTWORK

Submission Deadline: **9/16**

Facebook Voting: **9/19 - 9/26 (12PM - 12PM)**

Winner Announced: **9/26**

Submit Image Online @ [NWTC.edu/ArtisanCenter](https://www.nwtc.edu/ArtisanCenter)



CERAMIC STUDIO
COORDINATOR

Annie Stenseth

annie.stenseth@nwtc.edu

920-272-9810