

CERAMIC STUDIO NEWSLETTER

Artisan
and business center
— NWTC —
BLOCK 1 2025

NEW STUDIO CLAY BODY

365 Grolleg Porcelain STANDARD CERAMIC

Average Shrinkage 13.5% Absorption 0.60%

Grolleg porcelain is a fine, smooth clay perfect for creating delicate, lightweight pieces. It is known for its excellent plasticity and bright white color when fired. When made thin, it offers a translucent effect.

This clay is compatible with our Studio Glazes, and pieces can be placed on the kiln shelves alongside other wares. It will be bisque and glaze fired to the same temperature (cone) as our other studio clay bodies

If you want to avoid contaminating your porcelain, look for the canvas wedging board labeled "porcelain only".



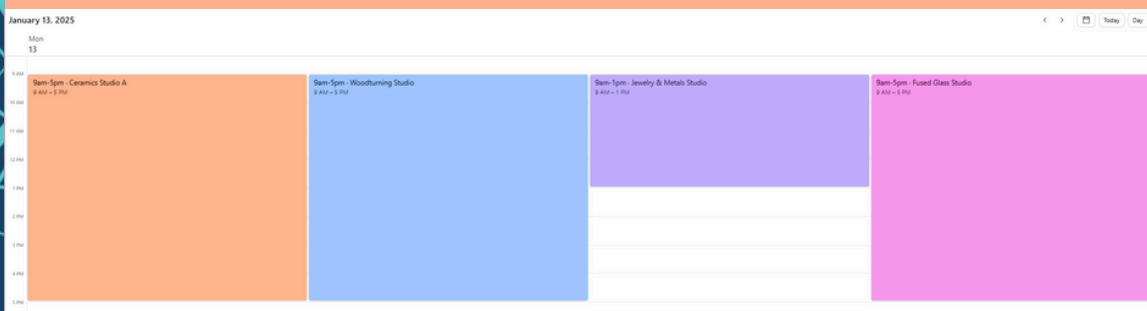
Porcelain glaze samples are located on the glazing table.

THE DIFFERENCE BETWEEN THE ABC'S ONLINE CALENDARS:

OPEN STUDIO CALENDAR (FOR MEMBERS)

The calendar is setup to display open studio hours across the building.

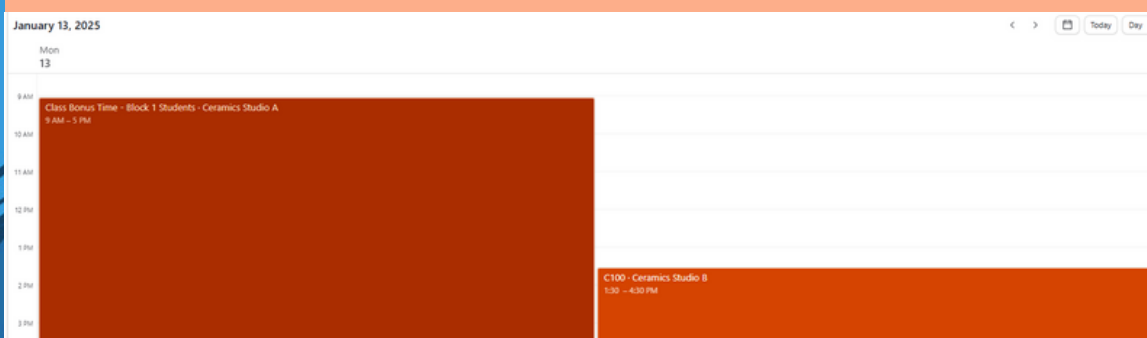
Open Studio Calendar



CLASS BONUS TIME CALENDAR (FOR STUDENTS)

The calendar is setup to display **Class Bonus Time** for using the studio outside of class. It also displays current ceramics classes.

Ceramics Student Resources



3RD

QUARTER CHALLENGE

Open to ALL Students & Open Studio Members

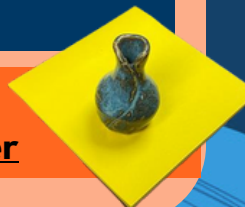
MAKE IT MINI!

For this challenge, you need to create a series of 3 or more miniature ceramic objects. Each piece must be smaller than a post-it note (3"). Pieces can be handbuilt or wheel thrown.

Submission Deadline: 3/24

Facebook Voting: 3/27 - 4/3 (12PM - 12PM)

Winner Announced: 4/4



Submit Image Online @
NWTC.edu/ArtisanCenter

REMEMBER TO PUSH DOWN ON TABS WHEN REMOVING PANS TO AVOID BREAKING THEM.

The pans are still functional without the tabs. Use provided yellow band to help secure pans in place



MORE RECLAIM COMING SOON!

Bags of **Laguna Speckled #50 WC606** will still be available for purchase at our front office. However, some bags will be mixed into our reclaim clay and processed through the pugmill, so expect more reclaim to be available soon (with more speckles).

Did you know? Reclaim is now being used in all our ceramic fundamental classes!



Laguna Speckled
#50 WC606



CERAMIC STUDIO
COORDINATOR
Annie Stenseth
annie.stenseth@nwtc.edu
920-272-9810